



The importance of a good start!

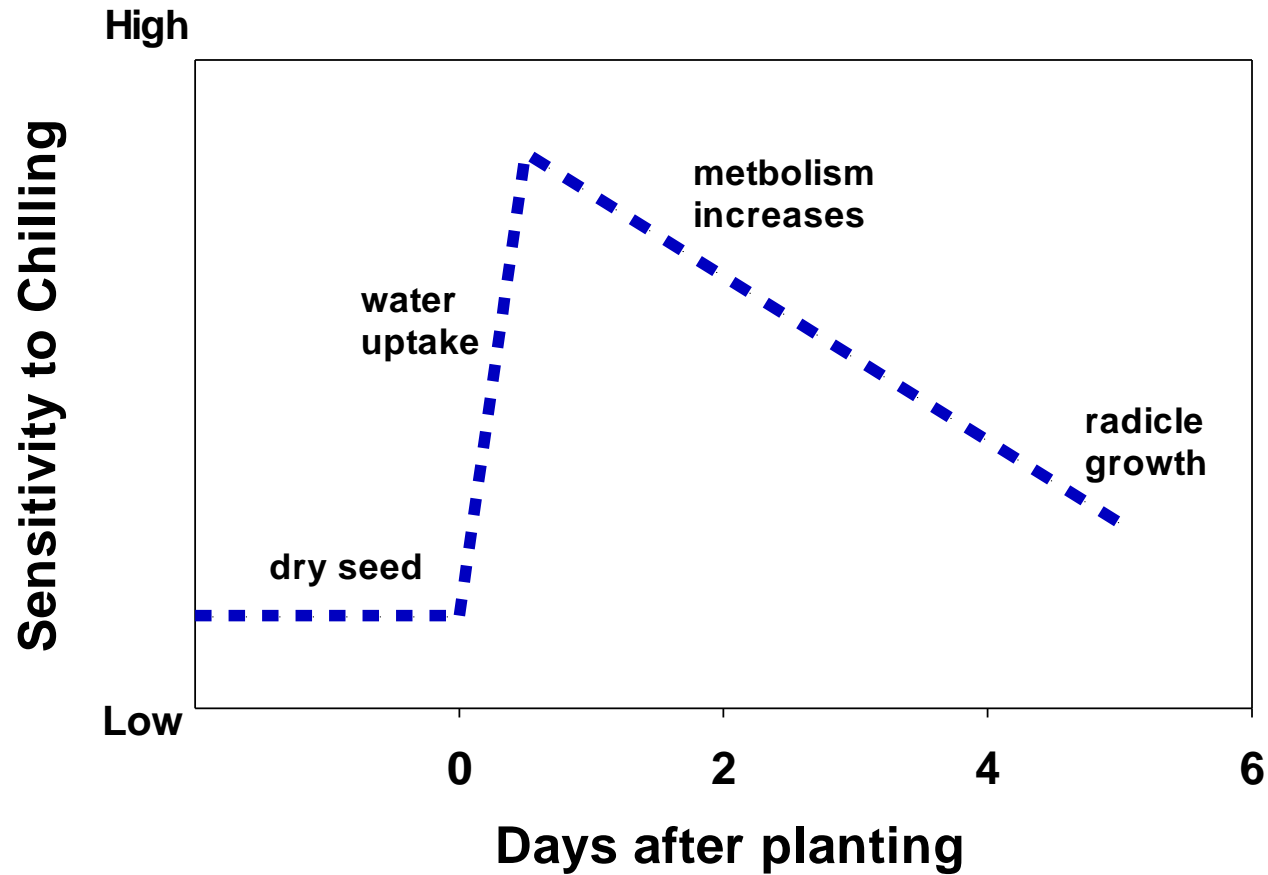
Michael Bange

August 2014

Why is a good start important?

- Uniform crop establishment (to avoid replanting)
- Vigorous start to crop growth to:
 - Outrun disease
 - Compete with weeds and insects
 - Develop healthy roots systems
 - Have a large and as healthy canopy prior to flowering
 - Avoid unnecessary delays that shorten fruiting cycle and/or achieve earliness
 - Improve efficiency of water use

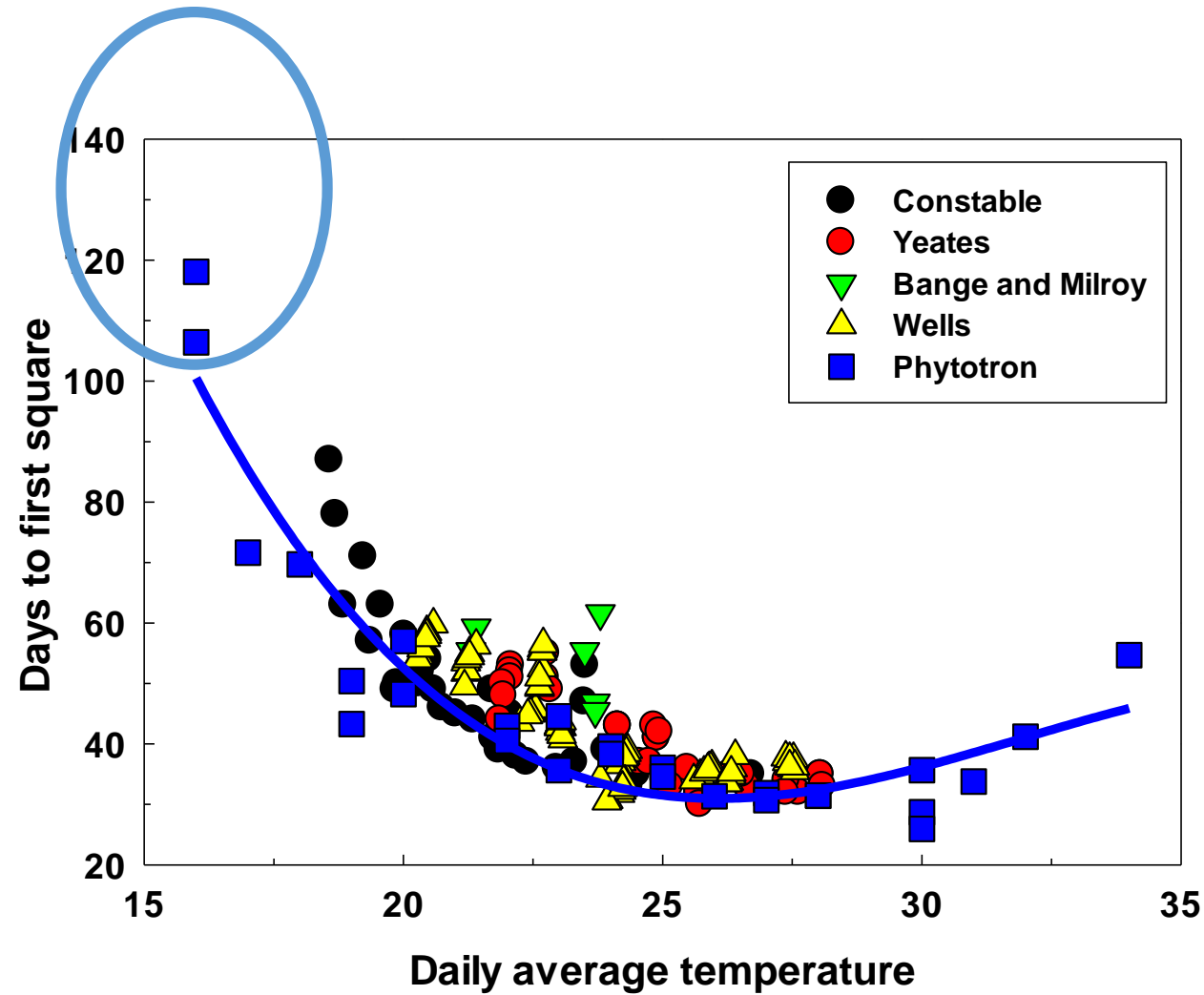
Chilling Sensitivity



• Planting time effects

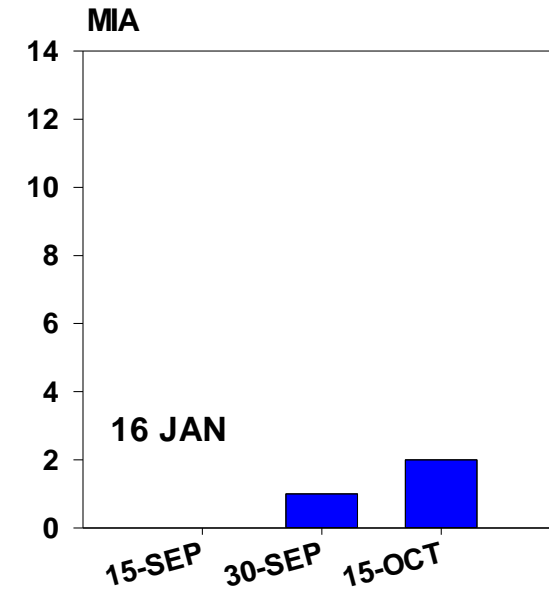
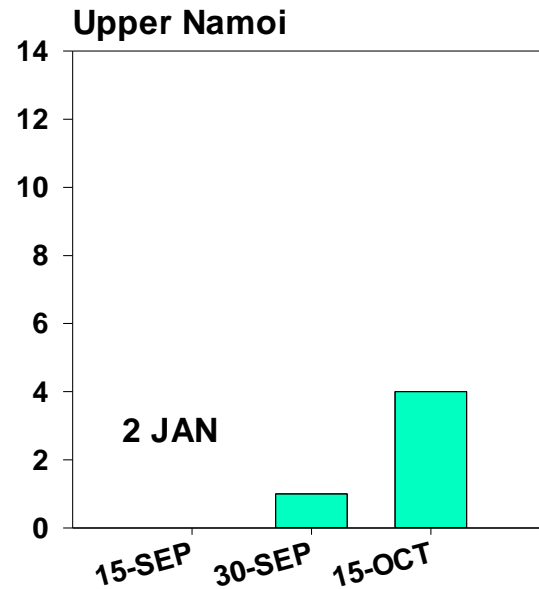
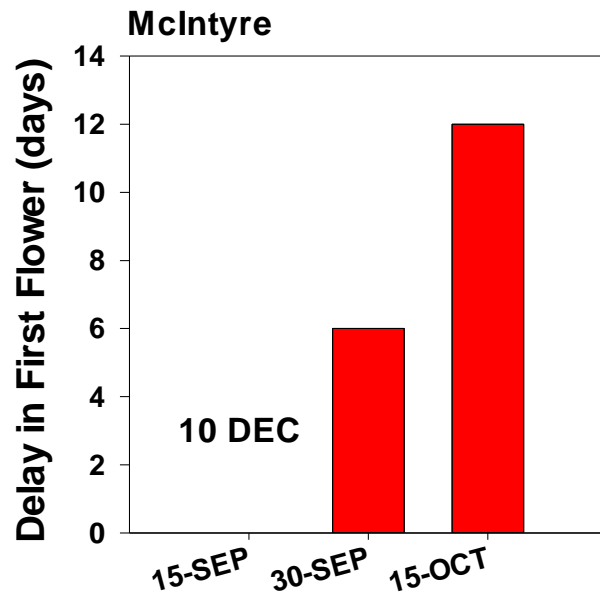


Crop development and temperature

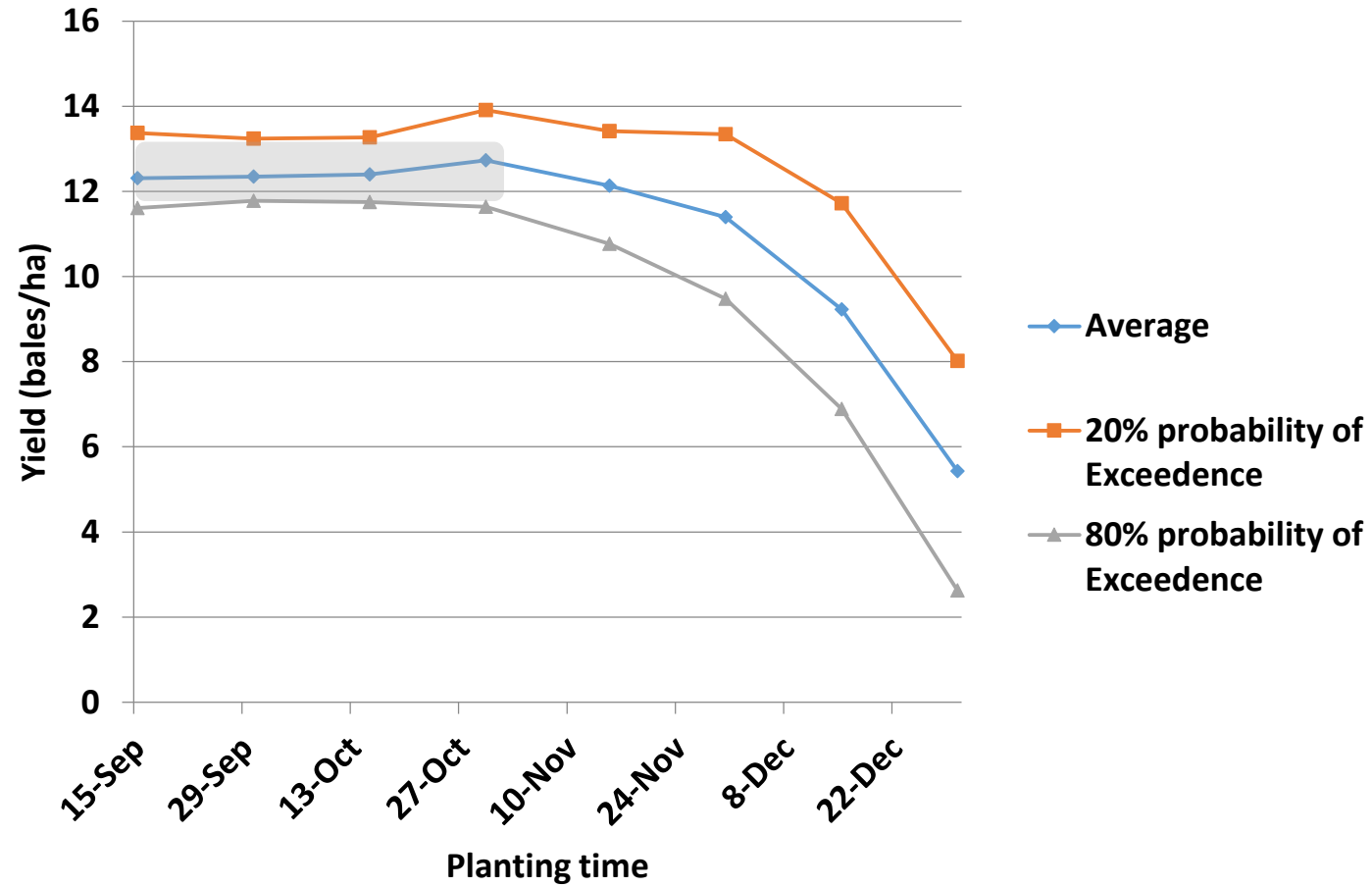


Crop development and planting time

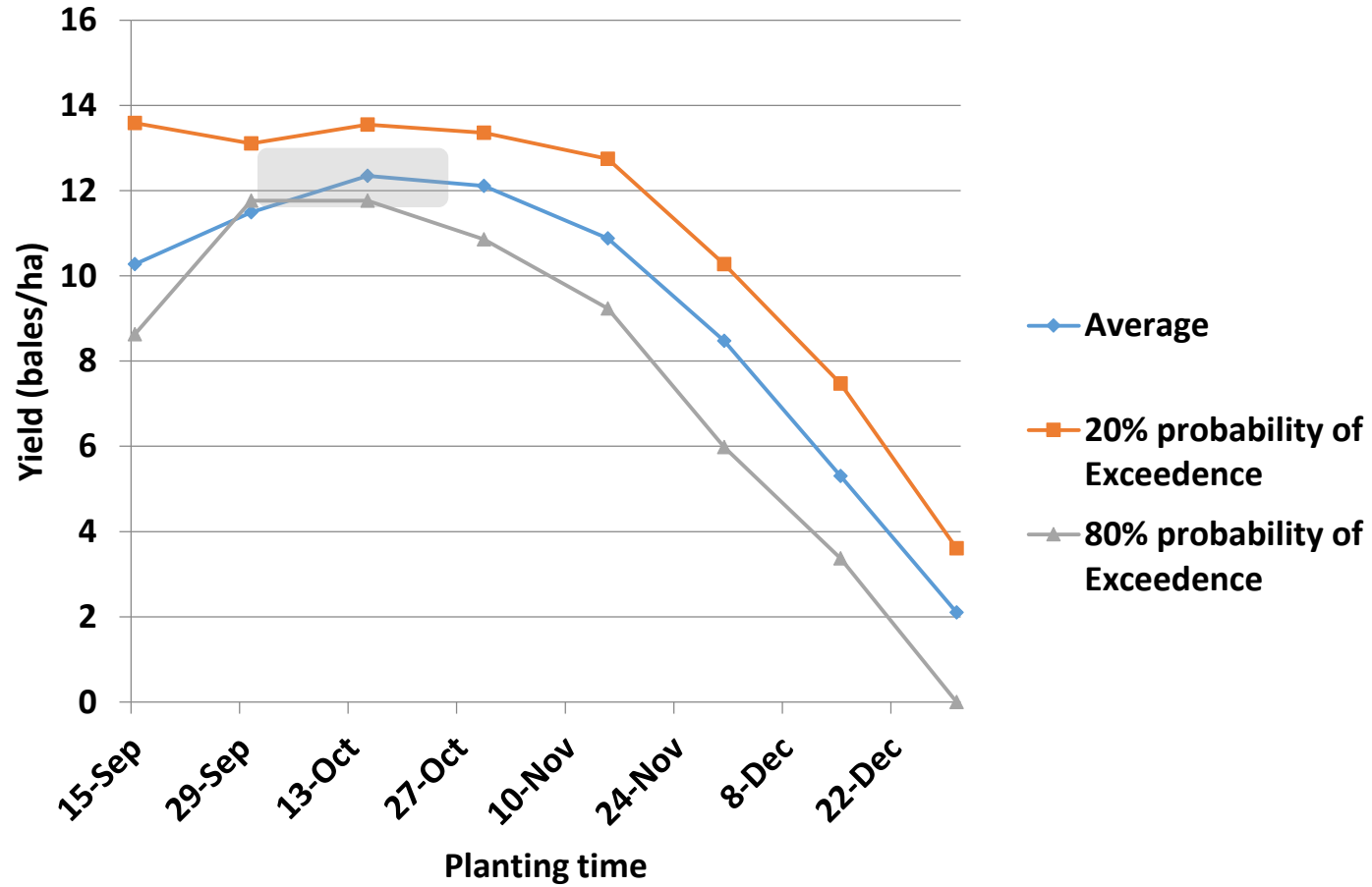
Compared with 15 September planting

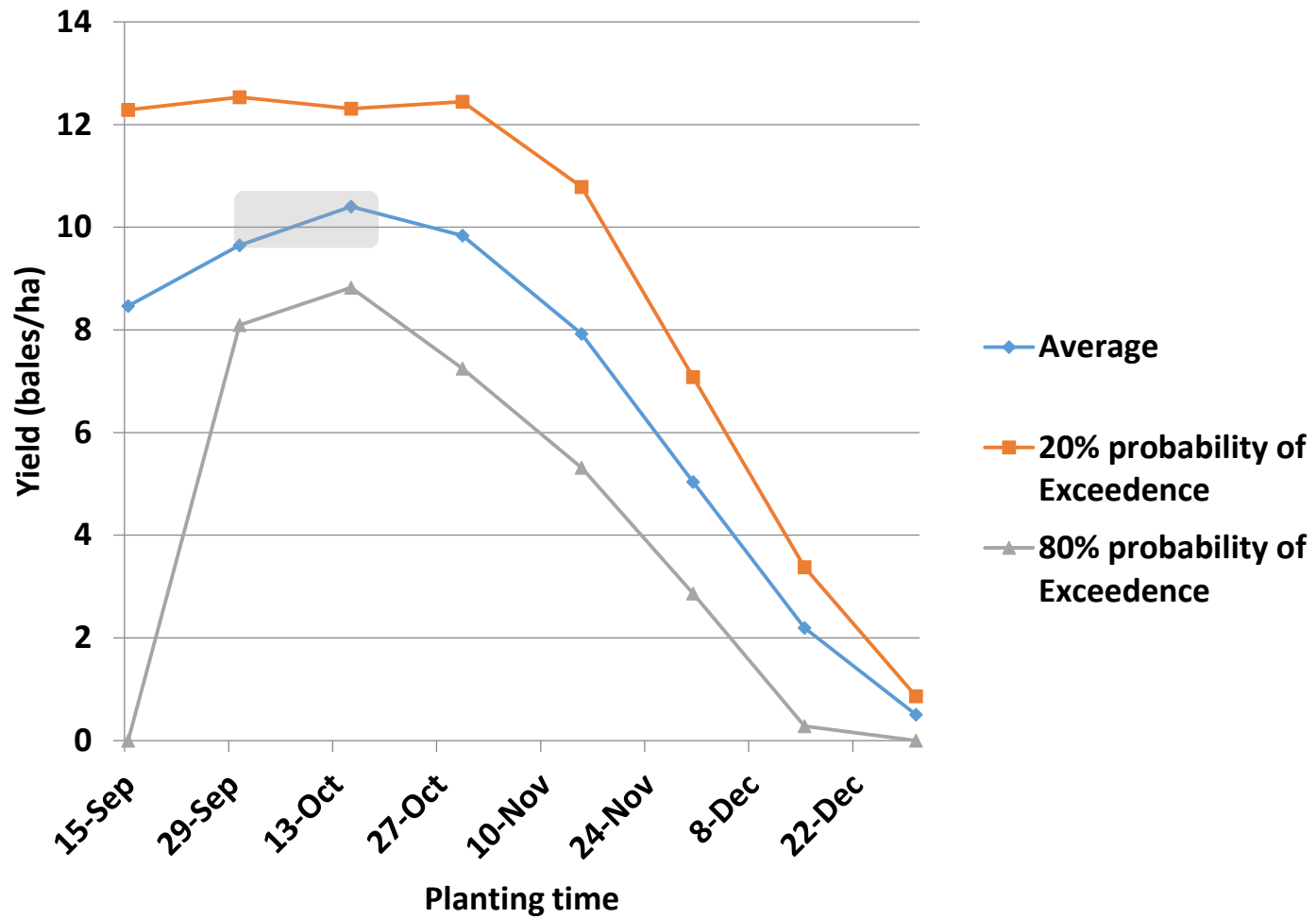


Planting Date

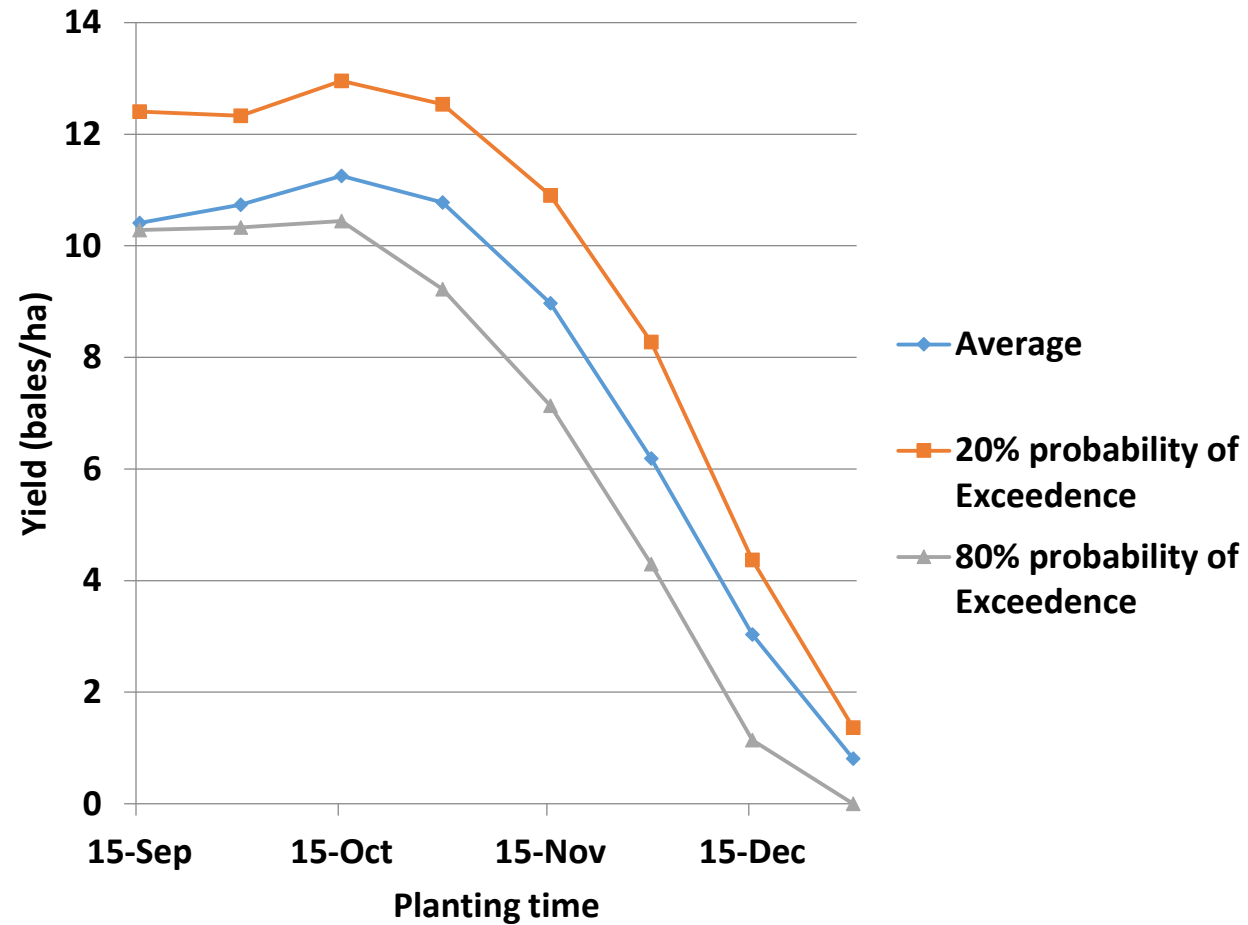


Upper Namoi



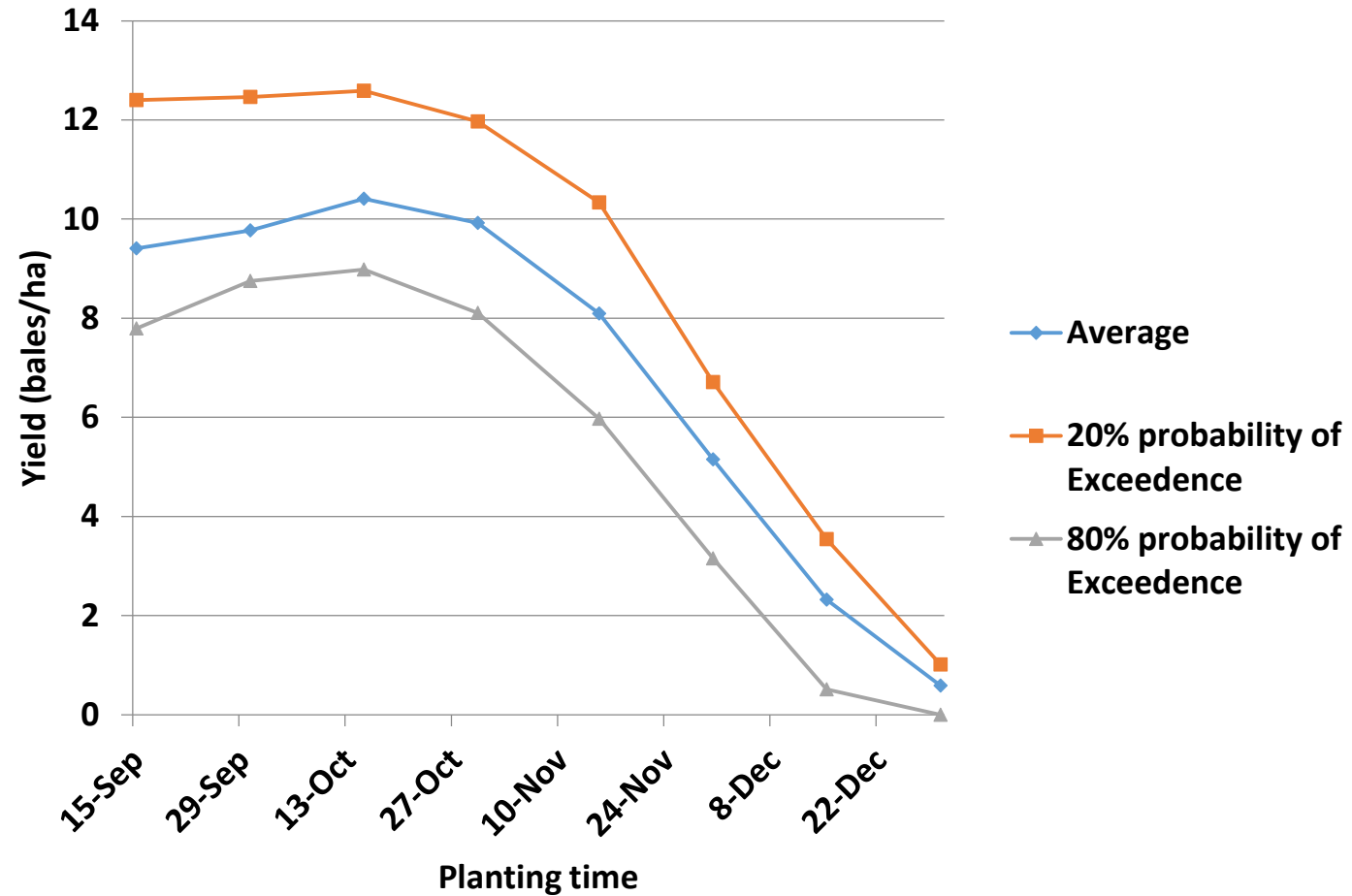


Carrathool



- Note that the temperature data is estimated from surrounding stations

Coleambally



Hillston

